

MONTHLY MEMBERSHIP PROGRESS REPORT

District 325B1

Results as of: 5/31/2020

GMT:

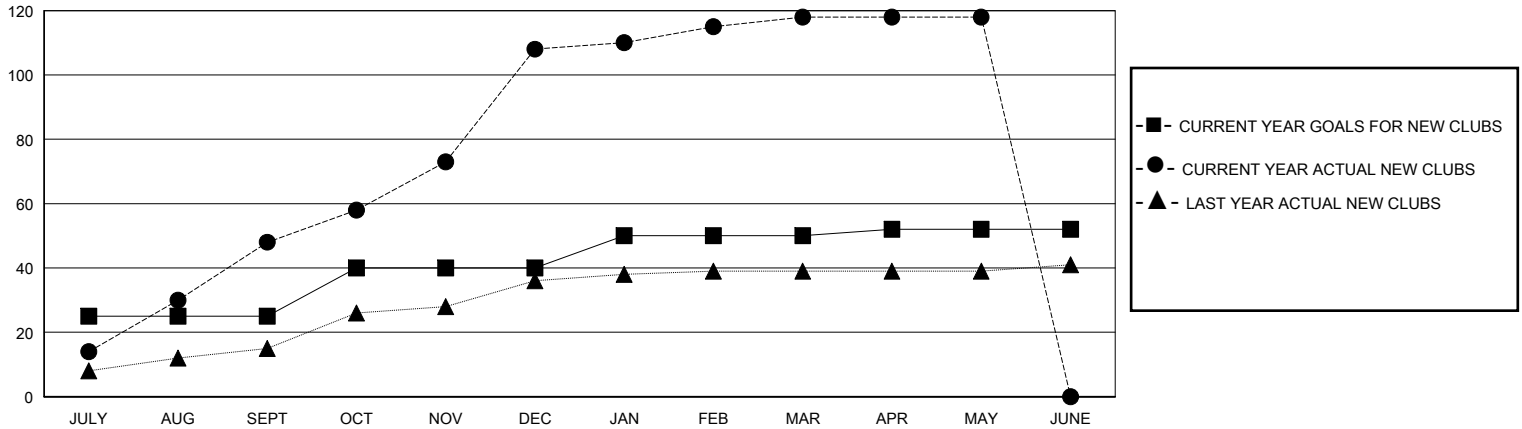
LOCATION NEPAL

GMT CA

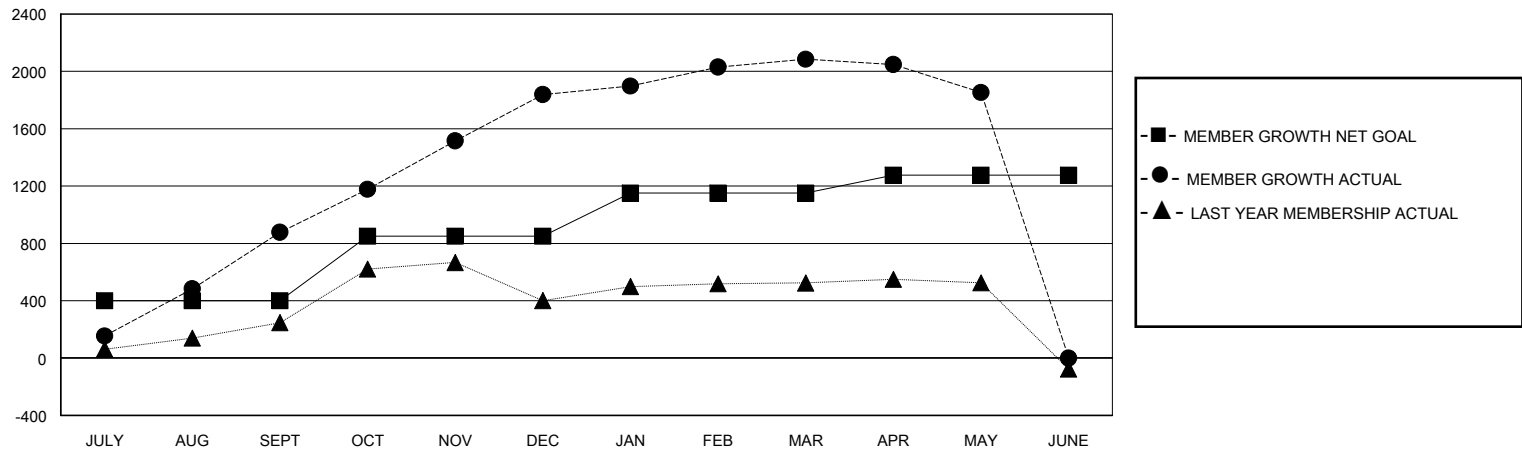
Clubs			
RESULTS FOR 2019-2020			
QUARTER	NEW CLUB GOAL	NEW CLUBS	DROPPED CLUBS
JULY/AUG/SEPT	25	48	0
OCT/NOV/DEC	15	60	3
JAN/FEB/MAR	10	10	1
APR/MAY/JUNE	2	0	0

Members			
RESULTS FOR 2019-2020			
QUARTER	MEMBER GROWTH NET GOAL	MEMBER GROWTH ACTUAL	DROPPED MEMBERS ACTUAL (including transfers)
JULY/AUG/SEPT	400	1357	440
OCT/NOV/DEC	450	1568	600
JAN/FEB/MAR	300	417	160
APR/MAY/JUNE	125	32	259

GOALS AND ACTUAL NEW CLUBS CUMULATIVE



GOALS AND ACTUAL MEMBERS CUMULATIVE



DROPPED CLUBS: 4

295 CLUBS OF 481 ADDED 1 OR MORE NEW MEMBERS

GENDER DISTRIBUTION

MALE 9,119 (72.92%)
FEMALE 3,387 (27.08%)

DROPPED MEMBERS

[CLICK HERE FOR CUMULATIVE MEMBERSHIP DATA](#)

DECEASED	6
CLUB CANCELLED	72
OTHER	1,381
TOTAL	1,459

TOTAL FAMILY UNIT MEMBERS	8,387
FAMILY MEMBERS PAYING HALF DUES	5,272